

**THE
MORWELL LAPIDARY CLUB
NEWSLETTER**

Edition No. 161



10th. March 2011

MORWELL LAPIDARY CLUB COMMITTEE 2011/12
--

PRESIDENT	Mr. Trevor Pickering Ph: 51 341250
VICE-PRESIDENT	Mrs Rhonda Dunn
JNR. VICE-PRESIDENT	Mr. Bert Vennix Ph: 51342834
SECRETARY	Mr. Rick Parker Ph. 51 222368
TREASURER	Mr. Colin Smith Ph. 51 221736
PUBLIC OFFICER	Mr Trevor Pickering Ph. 51 341250
WORKSHOP COMMITTEE	Mr. Ray Billingsley Ph. 51 342521 Mr. Jim Field Ph. 51. 992732 Mr. Kelvin Smith Ph. 51 745993 Mr. Ray Medew Ph. 51 221831 Mr. Alan Laidlaw Ph. 51 601312 Mr. JP Mr. David Goldsworthy Mr. Alan Martyn 51 758344 Mr. Colin Smith 51 221736
FUND RAISING COMMITTEE	Mrs. Joy Medew Ph. 51 221831 Mrs. Rhonda Dunn Mrs. Aleida Smith Ph. 51 221736 Mrs. Tracey Morrey Ph. 51 277382
LIBRARIAN	T.B.A. When required
EXHIBITION MANAGER	Trevor Pickering 0417390547
ASSISTANT EXHIBITION MANAGER	Sub Committee
FIELD TRIP OFFICER	Mr. Kevin Allpress Ph. 51 276498
CLUB POSTAL ADDRESS CLUBROOMS	P. O. Box 3501 Morwell Mail Centre 3841 Glengarry Road Tyers.
WEB ADDRESS	www.morwelllapidaryclub.asn.au

MEETINGS: General meetings are held on the 1st. Sunday of each month, commencing at 2:00 pm.
Field trips are held on the 3rd. Sunday of the month.

WORKSHOP TIMES: Each Sunday from 10:00 am if required, (excepting Field Trip weekends or as otherwise indicated on Roster). If no Members advise the duty officer they will be attending, then the Clubrooms may not be opened. So, if you want to use the workshop, make sure that you advise the duty officer before hand as per the conditions stated.

CONTENTS

Editors Note.....	Page 1
Annual General Meeting.....	Page 1
From the AGM.....	Page 2
March General Meeting.....	Page 3
February Field Trip.....	Page 4
March Field Trip.....	Page 4
April Field Trip.....	Page 4
Gem & Mineral Rockswap - Warragul.....	Page 4
Spotlight on Analcime.....	Page 5
Just for Fun.....	Page 8
Finis.....	Page 11

The Morwell Lapidary Club Inc.

NEWSLETTER

Edition No: 161

10th. March 2011



EDITOR'S NOTES EDITOR'S NOTES

Well, it's March already, and we have had our first couple of meetings, as well as the AGM which was held last Sunday. There was an extremely disappointing turn out for the meeting, with only 14 members in attendance. Apart from the fact that it is an important meeting from the viewpoint of running the Club, it also throws a lot of pressure back on to a handful of people when it comes to filling positions on the Committee, and making decisions about the running of the Club. We are fortunate in that we have a fairly dedicated group of people who are willing to keep taking on positions year after year, and we thank those people for their continued support. It would be great to see more of our members making the effort to attend our meetings, so that the people who are on the committee can see that their efforts and involvement are being supported by the members. We would love to see you at the meetings.

ANNUAL GENERAL MEETING: The meeting was chaired by Rhonda Dunn, and we would like to thank Rhonda for stepping into the breach when Alf and Linda moved to Queensland. Rhonda was re-elected as Vice-President, and I am sure will continue to do a great job of filling in for the President whenever the occasion requires. Many thanks Rhonda

Other changes to the committee were as follows:

President: Trevor Pickering

Jnr. Vice President: Bert Vennix. This is Bert's first time on committee, so thanks Bert for putting your hand up.

Rick Parker and Colin Smith have saddled up for another year as Secretary and Treasurer respectively, and we thank them both for their long standing commitment to the Club in their positions.

There were some other minor changes to working committees, and they are listed on the inside cover of the Newsletter, along with the full listing of committee members.

Members present at meeting:

Bill & Ellen Mathews, David Goldsworthy, Jim Field, Colin & Aleida Smith, Trevor & Lee Pickering, Rick Parker, Alan Laidlaw, Rhonda Dunn, Bert Vennix, Kevin Allpress, Ray Medew.

Apologies: Geoff & Dulcie Hanson, Lyn Vennix, Joy Medew, Noelle Goldsworthy.

For the first time in many years, a decision was made to increase the Club fees. This decision was taken reluctantly, but it was felt that with the Club currently planning to move premises, and the costs which will inevitably be involved with such a move, a small increase in fees was necessary. The new fees are as follows and will be applicable for the 2011/2012 year, and are due in June:

Family Membership		\$30.00
Single	"	\$25.00
Family Pension Membership		\$20.00
Single Pension	"	\$15.00
Junior	"	\$5.00

The membership fees for a Junior was not increased, however the joining fee of \$10.00 was deleted.

GENERAL MEETING - MARCH: The ordinary meeting for March was held after the AGM. Treasurer Colin presented the figures from the November combined Exhibition as they stand at this point in time. A final figure should be available at the April meeting, by which time, all outstanding incomes and expenditures will have been finalised. Following on from Colin's report, I tabled a letter from the Gippsland Antique Bottles & Collectables Club re the Combined Annual Exhibition. In the letter, they outlined plans for the next exhibition which they believe are required to be implemented. They believe that our Club needs to be more involved with the many tasks involved in the preparation and running of the exhibition, as well as some changes to the format of the event. Much discussion took place, and the general feeling of those members present, who represent the majority of our people who are directly involved in the event, was that given several factors ie;

Lack of numbers from our club (the same people every year are stretched to handle the tasks involved).

The increasing costs and limitations placed on the clubs by Latrobe City eg; Hired Security, increasing hall hire costs, testing and tagging of equipment & related costs.

The shared returns from the event are decreasing due to a combination of the added costs incurred and a decrease in numbers through the door.

The feeling that the event is now dominated by the other Club, and that our involvement is of secondary importance,

we need to look at our future involvement in the exhibition. In addition, it was felt that, as a Club, and at this time of a proposed relocation, and the obvious work involved with that, we need to focus our resources and concentrate on succeeding with that plan, whilst consolidating and ensuring the long term viability of our Club. Subsequently, a motion was put and passed, that we contact the Gippsland Antique Bottles and Collectables Club, and advise them that we will not be participating in the Annual Exhibition in the foreseeable future. However, members who may still wish to participate in the shows as individuals are free to do so. Similarly, our traders who have supported our show over many years will be advised of our decision, and will also be given the opportunity to continue to support the event if they wish to do so. This decision has been taken reluctantly, as our

Club has been involved in this event over a long period of time. However, given the relative lack of members available to help run the event now, and the other associated factors, it was decided to take this step.

FEBRUARY FIELD TRIP REPORT: Kevin advised the meeting that three members attended to February Field Trip to the Thornton Rock Swap, and joined in the VGCA field trips over the weekend. Kevin showed us some Topaz specimens he found, and he said that those who attended enjoyed the fossicking and the weekend.

MARCH FIELD TRIP: The field trip for March will be to Mundic Plateau fossicking for quartz crystals etc. in the creeks there. It will be on Sunday the 20th. March, and members are to meet at the northern end of Moore Street Moe, at the site of the old Wreckers Yard, ready to leave for the day at 9:30 am. Tools required are shovels, sieves, bucket, and rubber boots. Don't forget to bring your lunch and perhaps some insect repellent.

APRIL FIELD TRIP: There will be no field trip in April, as a lot of our members will be at the Gemboree in Bathurst NSW. However, Kevin advised that he will be attending the Gemboree, and hopes to organise a couple of field trips while he is there to areas he knows of. He will advise further at the April meeting.

Gem & Mineral Rockswap

The Warragul and District Lapidary Club are holding a Gem and Mineral Rockswap on Sunday 15th. May. If you are interested in participating in the tailgating section, then contact the Warragul Club as per the numbers provided on the flyer on the next page for further details. It was suggested at our meeting that we may try and organize a visit to the event as field trip in May. More details at our next meeting.



Attention Rockhounds!

The WARRAGUL AND DISTRICT LAPIDARY CLUB
will be hosting a massive

Gem & Mineral Rockswap

on **SUNDAY 15th MAY 2011, from 8am to 1pm,**
and you are invited you to participate in the tailgating section.

The Rockswap will be held at the Warragul Showgrounds, Logan Park, South Road, Warragul, outside the Club's Workshop.

Fee for a tailgating stall is \$15, and size (width) of the stall would be up to 5m. However, if you need a little more space, we can be flexible, but let us know on the attached form. A limited number of trestle tables – 2.4m (8') are available for hire for \$5 each. Please also indicate on the form if you require one or more trestle tables. Evidence of Public Liability Insurance is required, or this is available from Warragul & District Lapidary Club for \$10, see # 6 of the guidelines.

If you are interested in having a tailgating site, please fill in the attached application form. Please read the Terms and Conditions, and by signing this form, you indicate that you and any helpers agree to abide by them.

FREE ENTRY to the Showgrounds for Visitors, Rockhounds, Fossickers, and anyone interested in gems, jewellery, minerals and rocks.

Please do not hesitate to ring our contacts if you require any further information: Val & Richard Percy - 5622 1910, or John Parker - 5626 8319.

See you in May!

Kind regards,

Ruth McDonald
President

Elisabeth Smoorenburg
Secretary

ANALCIME

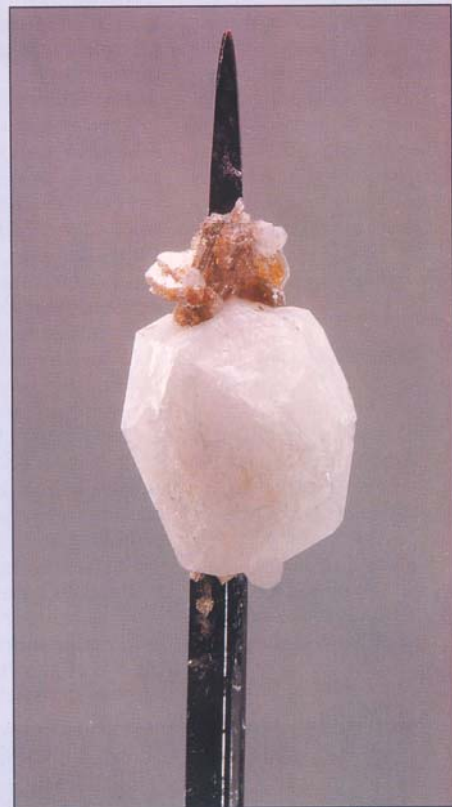
ANALCIME CRYSTALS ARE HIGHLY-PRIZED BY COLLECTORS. ALTHOUGH THEY ARE OF LITTLE PRACTICAL USE, THEY ARE AMONG THE MOST BEAUTIFUL MINERALS ON EARTH. WHEN HEATED, THEY GIVE OFF WATER



Analcime is a very common mineral, found in many countries. The mineral's white or pink crystals can be extremely beautiful and this makes it highly-prized by collectors.

When heated in a test tube, analcime expels crystallised water – a characteristic it shares with other minerals in the zeolite group.

Although known to Man since antiquity, it was first authenticated off the coast of Sicily in the 18th century by the French geologist, Dolomieu. Analcime can be found in crystals as big as a man's fist.



Above: An attractive analcime crystal mounted on an aegirine crystal from Mont St-Hilaire, Quebec, Canada.

Below: Pink crystals of analcime from the Siusi Alps near Bolzano, Italy. Both photographs underline the point that it is not only rare and unusual minerals that can be beautiful – analcime is considered one of the world's most common minerals.

CHARACTERISTICS

Analcime minerals belong to the zeolite family, which is a member of the silicates group. Zeolite minerals contain traces of the metals sodium and aluminium and they expel water when heated in a test tube.

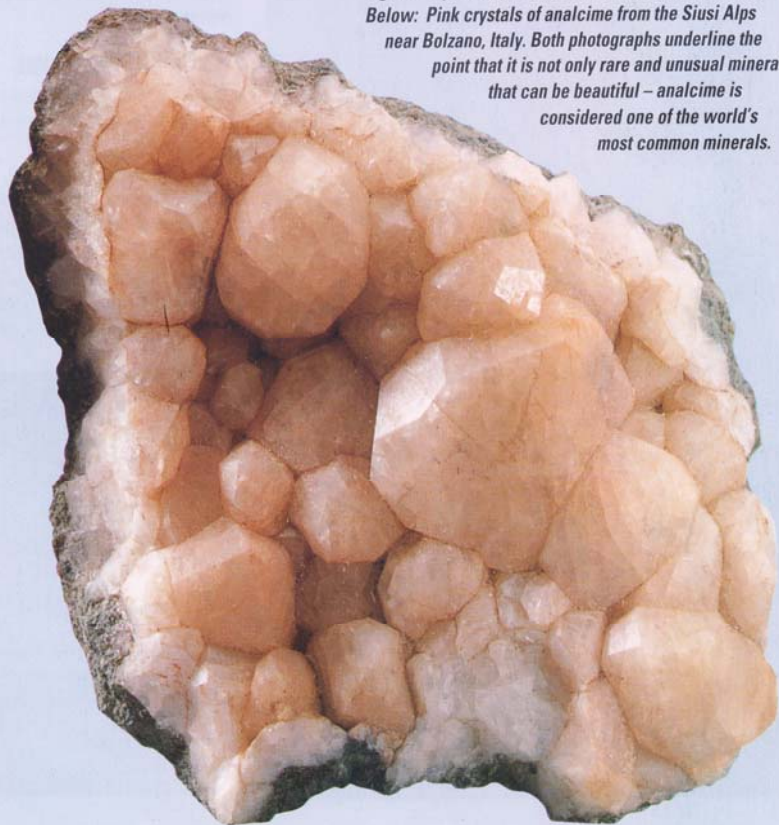
Analcime forms from the alteration of two other minerals, sodalite and nepheline, which existed in the Earth beforehand.

Analcime crystals are found all over the world. They are very common and range in size from tiny crystals to large lumps the size of a man's fist.

They are generally transparent and colourless, or opaque and white or pink. Occasionally, they can be yellow or green.

Sometimes the crystals have three distinct points. This effect is very beautiful and highly-valued by collectors.

Analcime is only moderately hard, rating 5.5 on the Mohs Scale of hardness. However, it is too soft and brittle to be of any use to industry. It has a glassy appearance and melts easily.



SECONDARY MINERAL

Analcime is a secondary mineral, which means that it forms as a result of some chemical change that has occurred in another mineral that was lodged in the ground beforehand. (Analcime can, however, occur as a primary miner-

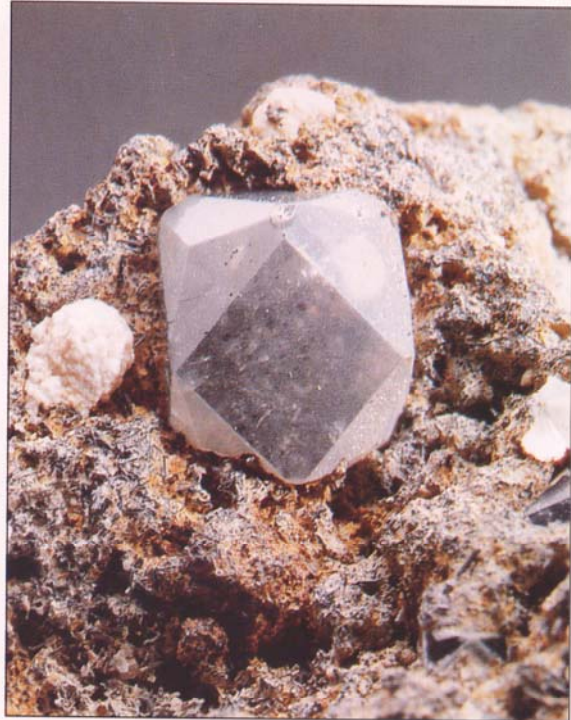
ORIGINS

Analcime is usually a secondary mineral, but it may also occur as a primary mineral in alkali-based rocks. It is found in volcanic rocks like basalt, and in some sandstones. Large analcime deposits are found in Scotland, N. Ireland, the USA, Canada, Iceland, Greenland, Norway and Italy.

al in alkali-based rocks). Examples of the pre-existent minerals that help form analcime are sodalite and nepheline.

The biggest problem facing collectors who are looking for analcime is that its shape is very similar to another mineral called leucite. Both minerals contain aluminium, but leucite also contains the metal potassium in its crystals, while analcime contains the metal sodium. Another difference between the two is the fact that analcime is found in large quantities all over the world, while leucite, because it is unstable at high pressure, is found in fewer countries and in smaller areas.

The name analcime comes from the Greek word meaning *weak*, or *without strength*. Analcime has no practical use, but it is of great interest to scientists and collectors.



Above: A perfect single crystal of analcime from the island of Lachea, close to Acitrezza (Catania).



Left: Analcime crystals together with the minerals mesolite and calcite. Large deposits of this commonplace mineral are found in Scotland and Northern Ireland.

TESTING FOR ANALCIME

Mineral collectors can test for analcime in the following three ways:

1. Heat the sample in a flame. If it is analcime, it will melt and the flame will turn yellow.

2. When heated in a closed test tube, analcime will give

off crystallised water. This is a characteristic that is shared by all the minerals in the zeolite family, of which analcime is a member. Other minerals in the zeolite group are heulandite, stilbite, harmotome, chabazite, natrolite, thomsonite and laumontite.

3. Analcime dissolves in acids.

FACT FILE

ANALCIME

Group: Silicate

Crystal system: Cubic

Chemical formula: $\text{NaAlSi}_2\text{O}_6 \cdot \text{H}_2\text{O}$

Hardness: 5.5

Density: 2.24-2.29

Cleavage: Indistinct, unclear

Fracture: Conchoidal

Colour: Colourless

Streak: White

Lustre: Vitreous

Fluorescence: Absent

The previous article and images were taken from the publication "Treasures of the Earth - The Minerals and Gemstones Collection" published by Orbis - De Agostini Group.



JUST FOR FUN

Melanie, (Age 5) asked her Granny how old she was... Granny replied she was so old she didn't remember any more. Melanie said, "If you don't remember, you must look in the back of your panties. Mine say five to six."

Brittany (age 4) had an ear ache and wanted a pain killer. She tried in vain to take the lid off the bottle. Seeing her frustration, her Mom Explained it was a child-proof cap and she'd have to open it for her. Eyes wide with wonder, the little girl asked, : How does it know it's me?"

James (age 4) was listening to a Bible story. His dad read: "The man named Lot was warned to take his wife and flee out of the city, but his wife looked back and was turned to salt." Concerned, James asked, "What happened to the flea?"

This particular Sunday Sermon....."Dear Lord," the minister began, with arms extended toward heaven and a rapturous look on his upturned face. "Without you, we are but dust...." He would have continued but at that moment my very obedient daughter who was listening leaned over to me and asked quite audibly in her shrill little four year old girl voice, " Mom, what is butt dust?"

The importance of walking.....

1. Walking 20 minutes can add to your life. This enables you at 85 years old to spend an additional 5 months in a nursing home at \$7000 per month.
2. My Grandfather started walking five miles a day when he was 60. Now he's 97 years old and we haven't a clue where the hell he is.
3. I like long walks, especially when they are taken by people who annoy me.
4. The only reason I would take up walking is so that I could hear heavy breathing again.
5. I joined a health club last year, spent about 400 dollars. Haven't lost a pound...apparently you have to actually go there.
6. I do have flabby thighs, but fortunately my stomach covers them.
7. The advantage of exercising every day is so when you die, they'll say, "Well, he looks good doesn't he?"

\$100.00.....

A little boy wanted \$100.00 very badly, and prayed for weeks, but nothing happened. Then he decided to write God a letter requesting the \$100.00. When the Postal authorities received the letter addressed to God, Australia, they decided to send it to Julia Gillard.

Gillard was so amused that she instructed her Secretary to send the little boy a \$5.00 note. She thought this would appear to be a lot of money to a little boy.

The little boy was delighted with the \$5.00 note and sat down to write a thank-you note to God, which read:

Dear God. Thank you very much for sending the money. However, I noticed that for some reason you sent it through Canberra and those B.....s took \$95.00 in taxes!!

The truth about the Titanic.....

The plane leaves Heathrow Airport under the control of a Jewish Captain. His co-pilot is Chinese. It's the first time they've flown together, and an awkward silence between the two seems to indicate a mutual dislike.

Once they reach cruising altitude, the Jewish captain activates the auto-pilot, leans back in his seat, and mutters, "Ya know, I don't like the Chinese!"

"No rike Chinese?" asks the co-pilot, "why not?"

" You people bombed Pearl Harbour, that's why!"

"No, no," the co-pilot protests, "Chinese not bomb Peahl Hahbah! That Japanese, not Chinese."

"Japanese, Chinese, Vietnamese...doesn't matter, you're all alike!"

There is a few minutes of silence.....

"I no rike Jews!" the co-pilot suddenly announces.

"Oh yeah, why not? Asks the captain.

"Jews sink Titanic!" says the co-pilot.

"What? You're insane! Jews didn't sink the Titanic!" exclaims the captain, "It was an iceberg!"

"Iceberg, Goldberg, Greenberg, Rosenberg...no mattah...all same!"

Well, that's about it for this edition. Look forward to catching up with you all very soon.

Until then.....fruitful fossicking

